



## FDM181 Manual Call Point Product Manual

### Overview

---

The manual call point serves for the manual activation of alarms in case of fire. It consists of a housing and a electronic component.

### Characteristic

---

- Resettable operation panel
- Automatically address setting without encoder setting or Dip-switch
- Indication of the condition (Alarm or Locate) by means of a LED
- Communication via FD18-BUS
- "Sticker Method" easy for commissioning

### Function

---

- Direct alarm activation by pushing operation panel
- Reset manual call point to normal by resetting operation panel with the key

### Application

---

- for the immediate manual activation of a fire alarm or an extinguishing process
- for indoor application
- for surface- and recess-mounted feed lines in easily accessible places

## Indicator

The table shows the LED indication for different status.

Status	LED indicator
Normal	Off
	Flashing when connected with FC1840-A3 (for Russian).
Locate/Test	Flashing
Alarm	Steady on

## Installation

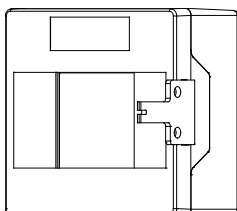
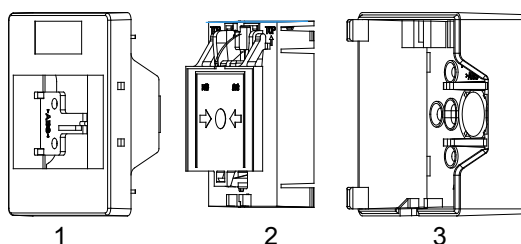


Fig. 1



(1/3—housing; 2—electronic component)  
Fig. 2 Exploded view

### Preparation

Take out the key, open the housing. (Fig. 1) Keep the key in a safe place.

Fix the housing.

Drill the inlet opening (Break the joint between the opening and the housing with a screwdriver)



#### Risk of injury!

Observe the tool manufacturer's safety notes!

### Installation

1. Fix the housing at a height of 1.3 to 1.5 m on an even surface.
2. Pull the cables through the inlet opening(s) and into the housing.
3. Close the housing with the cover.

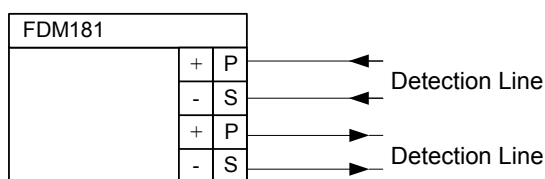


Fig. 3

### Electric connection

1. Open cover with key (see Fig. 1).
2. Connect the feed line to the terminals on the electronic component according to the connection diagram (see Fig. 3).
3. Place the electronic component into the housing with the inscription "TOP" pointing upward (terminals at the right) until the locking device engages (see Fig. 2).
4. Close the housing with the cover.



**Pay attention to the cables when placing the electronic component into the housing!**

## Dimensions

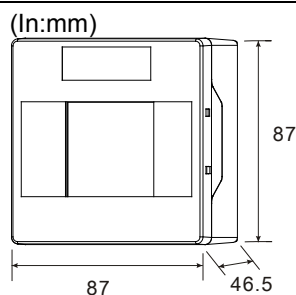


Fig. 4

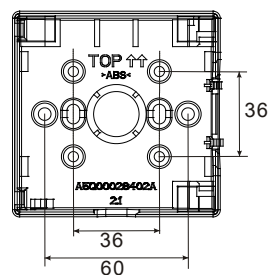


Fig. 5

## Commissioning

### Performance check

1. Set the manual call point to Test Mode.
2. Press down the operation panel. The LED flashes.
3. Inset the key from the bottom (see Fig.6) to turn the operation panel to its initial position.
4. Pull off the key. Set the manual call point back to Normal Mode.

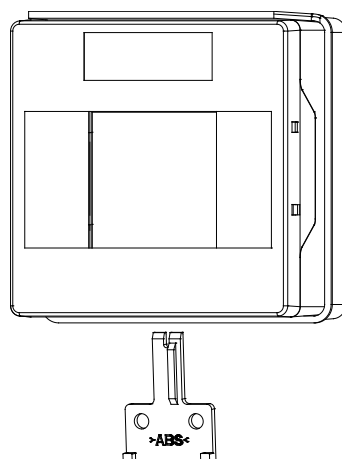


Fig. 6

## Specification

Operating voltage	12 ... 32 VDC
Operating current (quiescent)	0.22 mA
Activation current	1.2 mA
Operating temperature	-10 ... +50 °C
Storage temperature	-20 ... +75 °C
Humidity	≤95 %
Communication protocol	FD18-BUS
Load factors	1
Connection terminals	1.0 ... 1.5 mm <sup>2</sup>
Color	Red, RAL3000
Protection category EN60529 / IEC529/GB4208-93	IP44
Approval (for Russian)	TR RF N123-FZ

## Details for ordering

Type	Material NO.	Part No.	Designation	Weight
FDM181	S54321-F1-A1	100856214	Manual Call Point	0.135 kg
FDMH181	S54321-B1-A101	100666355	Housing red, with key	0.086 kg
FDME181	S54321-A1-A101	100680558	Electronic component	0.049 kg

Beijing Siemens Cerberus Electronics Limited  
No.1,Fengzhidonglu, Xibeiwang, HaiDian District,  
Beijing, 100094, China  
Tel: +10 6476 8806  
Fax: +10 6476 8899

© Data and design subject to change without notice.